

Usage of the QNix Gauge Update Wizard

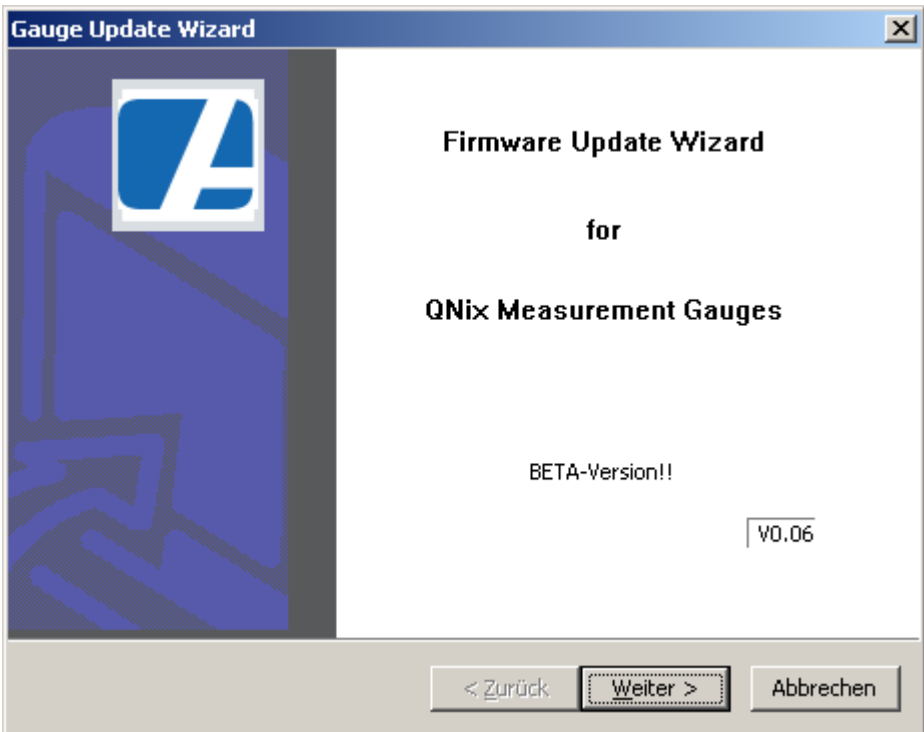
Installation

Unzip the downloaded file (GaugeUpdateWizard.zip) and start the setup program (setup.exe). Follow the instructions of the setup program to install the Gauge Update Wizard.

Usage

Start the program by doubleclicking on its icon on the desktop, by selecting from your start menu or by doubleclicking the exe file in an explorer window.

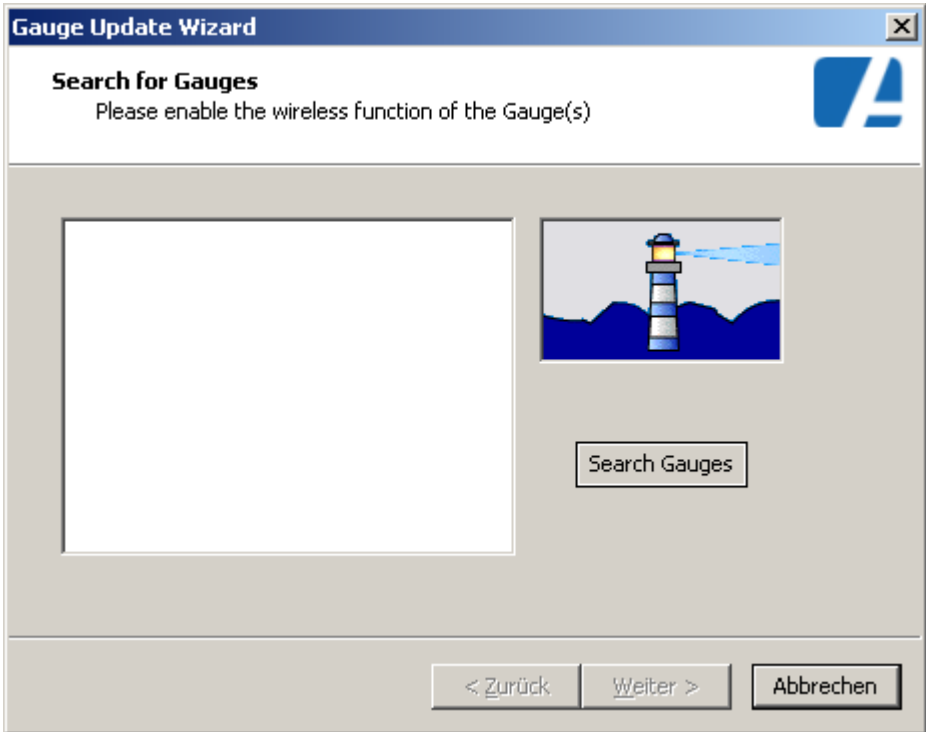
The GaugeUpdateWizard will show its introduction screen.



Screen 1: Introduction screen

Click „Next“ to continue.

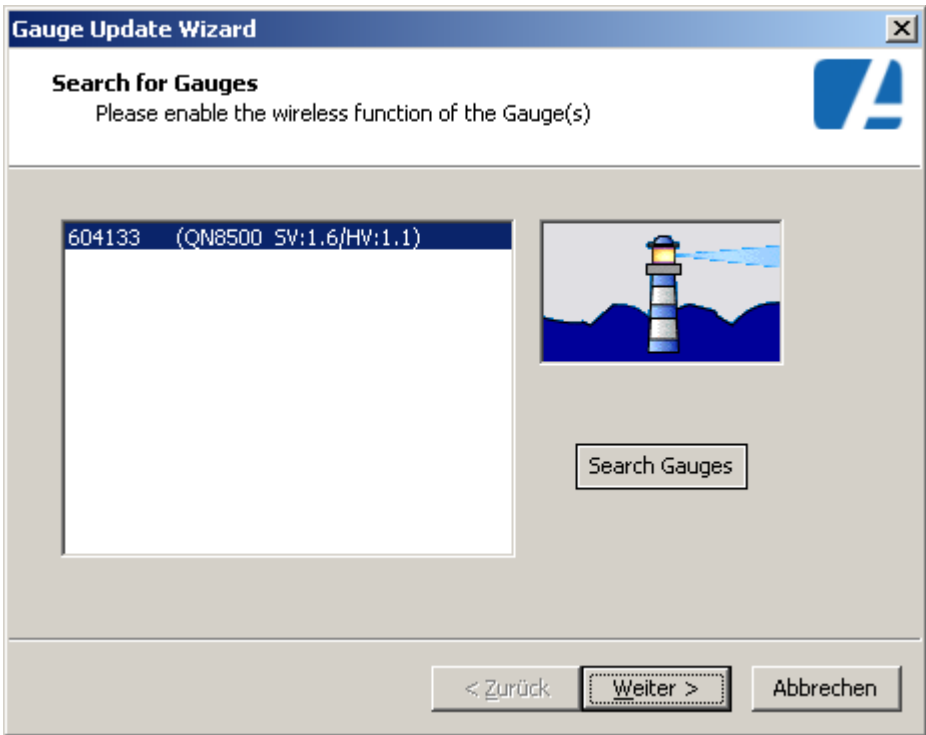
You will now see the search gauges dialog.



Screen 2: search gauges dialog

Make sure you have the wireless link of your gauge enabled (select Setup/Wireless/On from the menu of your gauge) and the USB dongle connected to your computer. Then click „search gauges“ in the dialog.

After some seconds, the gauge (or gauges, if there are several gauges within the range of the wireless link) should be listed in the text box of the dialog.



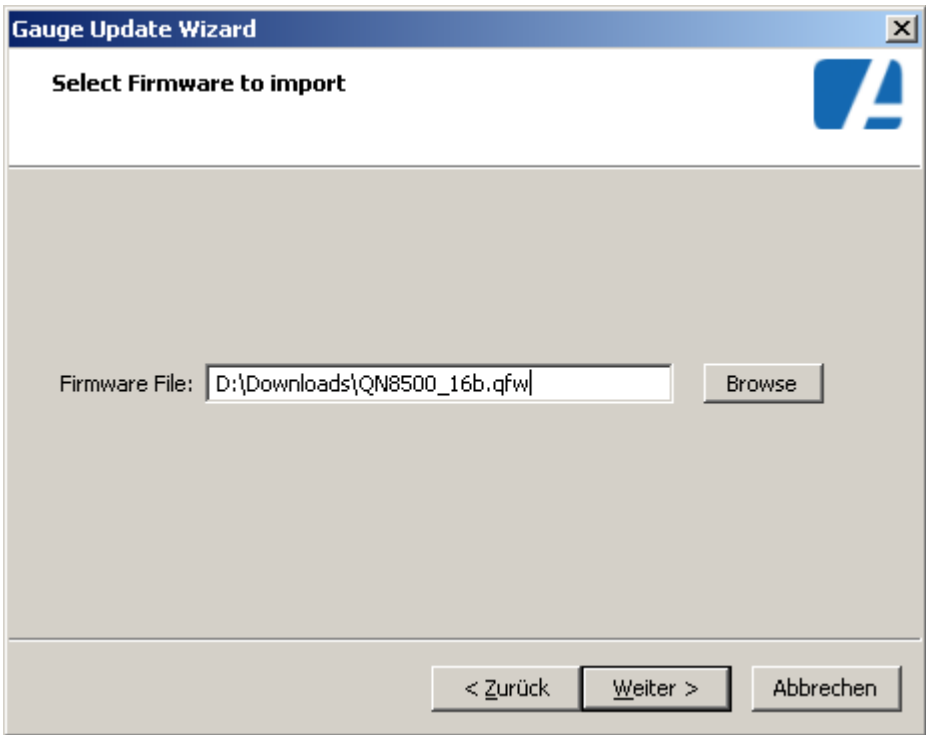
Screen 3: search gauges dialog with 1 gauge found

In the example above, the wizard has found a gauge with serial number 604133, Firmware Rev. 1.6 and Hardware Rev. 1.1.

If the list shows more than 1 gauge, select the one you want to update.

Press „Next“ again.

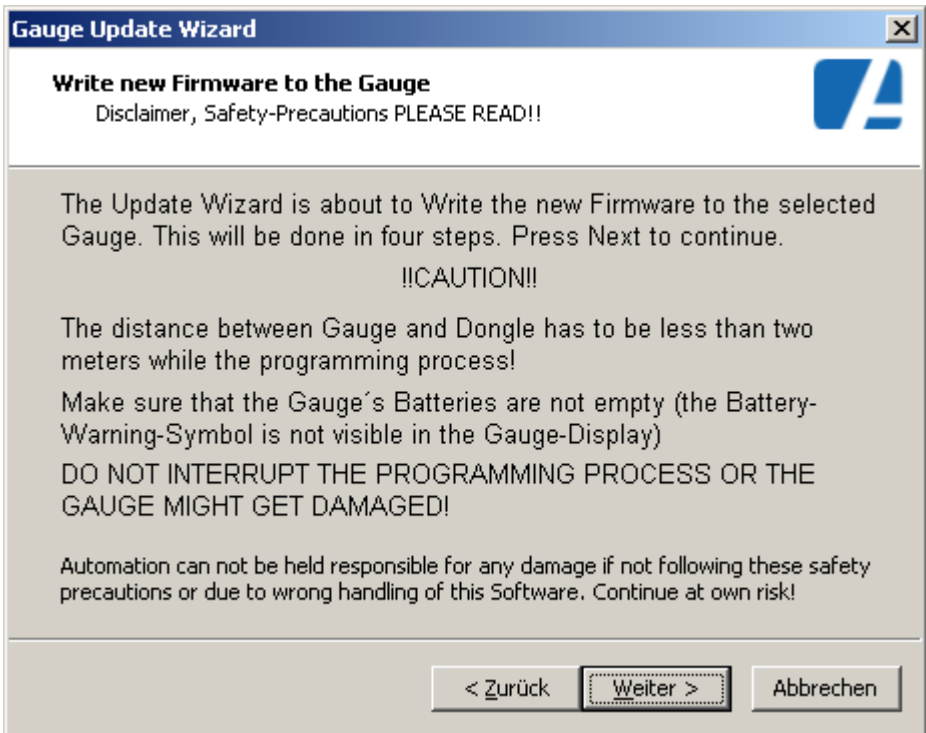
You will see the firmware selection screen now. Click „Browse“ to select the appropriate update file from your hard disk or CD. QNix gauge update files have the extension „.qfw“. You can also enter the path and filename directly into the text box.



Screen 4: firmware selection screen with selected file

Click „Next“ again.

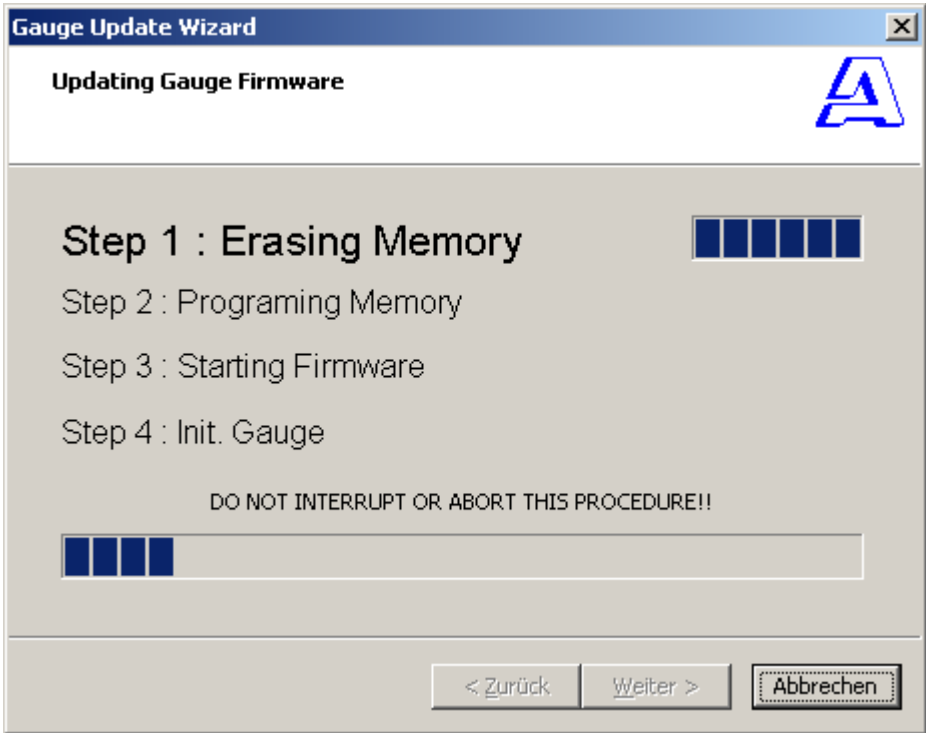
You will now be presented an information and warning screen.



Screen 5: information and warning screen

Please read the warnings carefully and stick strictly to the instructions. Click „Next“ to continue.

The update progress window will appear, and the lights in the keypad of the gauge will flicker. Do not interrupt the update. It will last several minutes.



Screen 6: progress indicator

When the update is finished, the gauge will beep, and an ok box will tell you to wait another 8 seconds for the initialization of the gauge to finish.

When the display of the gauge turns on again, confirm that your gauge is updated by selecting „Setup/SystemInfo“ from the Menu.